

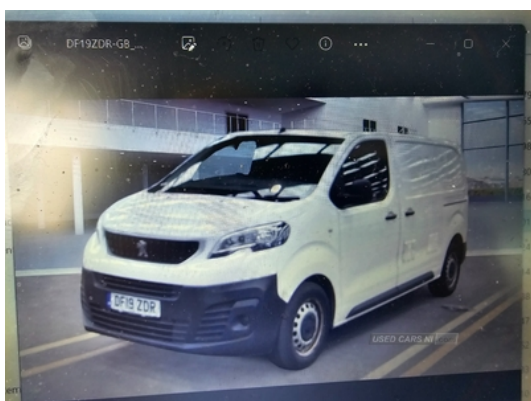


4-6 Main Street Ballyclare BT39 9AG Unit 1 89c Victoria Road Newbuildings L/Derry BT47
2SX, Ballyclare, BT39 9AG
David Browne: 07849491999

Peugeot Expert 1400 2.0 BlueHDi 120 Professional Van | Aug 2019

2019 EXPERT 2 LT 6 SPEED £ 7250

£7,250



Miles:	87500
Fuel Type:	Diesel
Transmission:	Manual
Colour:	White
Engine Size:	1997
CO2 Emission:	139
Tax Band:	Light goods vehicle (£335 p/a)
Body Style:	Van
Reg:	DF19ZDR

2019 expert 2 lt 6 speed

Full years mot

Coming home from the UK next week

Loads of history

Trade sale £7250 plus vat no offers

This is price to sell as it comes home

Finance available

Call David 07849491999

Van at Bt399ag Ballyclare

Vehicle Features

6 load tie-down hooks in cargo area, 12V socket in cabin, 12V socket in cargo area, Alarm, Automatic fuel cut off and door unlocking in the event of accident, Automatic lights and wipers, Black front and rear bumpers, Central locking push button on dash, Closed upper and open lower glove boxes, Courtesy light, Cup holders for driver and passenger at top of dashboard, Dashboard storage areas, Door opening warning and audible lights on warning, Driver and front passenger airbags with passenger deactive switch, Driver and passenger sun visors, Drivers seat adjustable for reach and rake, Drivers seat rake and reach adjustable with lumbar adjustment and armrest, EBA and EBFD, Electric front windows with one touch & anti pinch function, Electric pack - Expert, Electrochrome rear view mirror, Electronic Stability Control and ABS with hill start assist, exterior door handles and door mirrors, Front/rear cupholders, Front door pockets with 1.5L bottle holder, Front windows tinted to 30 percentage opacity, Full size steel spare wheel, Green tinted glass, Hard plastic floor protection in cabin, Height-adjustable 3-

Technical Specs

DIMENSIONS	
Length:	4959mm
Width:	1920mm
Height:	1940mm
Seats:	3
Luggage Capacity (Seats Up):	
Not AvailableL	
Gross Weight:	3100KG

PERFORMANCE & ECONOMY	
Fuel Consum. (Urban Cold):	47.9MPG
Fuel Consum. (Extra Urban):	57.7MPG
Fuel Consum. (Combined):	53.3MPG
Fuel Tank Capacity:	70L
Number Of Gears:	6 SPEED
Top Speed:	106MPH
Acceleration 0-100 km/h:	13.3s
Engine Power BHP:	120.7BHP

point pre-tensioner seat belts with force limiter, Height adjustable head restraints, Height and reach adjustable steering wheel, High level third brake light, Laminated acoustic windscreen, Lights on warning buzzer, Load area light, Lockable fuel filler cap, Mica cloth/Vinyl upholstery, Multi-function on-board trip computer, PAS, Rear tilting/removable parcel tray, Remote central locking with deadlocking, Retractable assist grips (5), Rev counter, Rolling code transponder immobiliser, Rubber load floor cover, selective cab and load area locking via 3 button flip remote control key, side rubbing strips, Storage under squab of central passenger seat, Temp spare wheel, Ticket holder, Twin rear headrests, Twin sliding side doors, Two speed intermittent front wipers, Unfastened seat belt warning for driver and front passengers, Visibility pack - Expert